



MATR^X

A Glue Dots™ Product

Breakthrough Technology

MatrX, the innovative micro-dot adhesive pattern from Glue Dots™ International, provides effective, continuous coverage on almost any substrate. A cleaner, easy-to-use alternative to transfer tapes, double-sided tapes, and liquid glues, **MatrX** is designed with endless benefits for a variety of industrial applications.

Numerous Benefits:

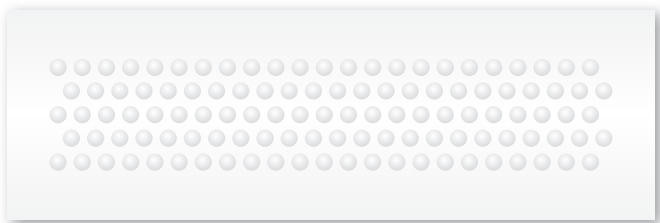
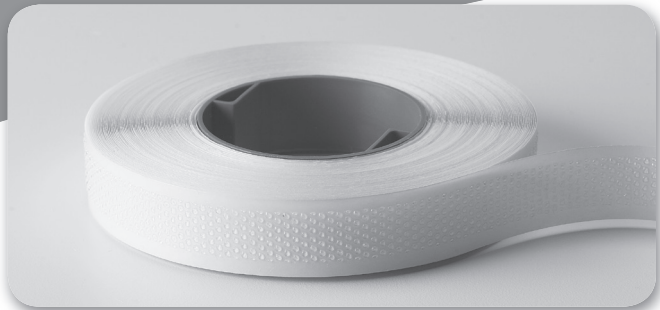
- Instant bond
- Clean cut-off
- Permanent & Removable
- Up to 0.4mm thick
- No waste, no residue
- Accurate placement, any length

Endless Applications:

- Packaging displays
- Printing/Bindery
- Direct Mail/Fulfillment
- Carton re-sealing
- Point-of-Purchase
- Matting/Framing



MatrX® Adhesives



Specifications

Profile:	Small MatrX: 0.2mm thick Large MatrX: 0.4mm thick
Width:	6mm or 12mm
Strength:	Permanent or Removable (Small MatrX™ only available in Permanent)
Length:	Small MatrX: 43 meters Large MatrX: 18 meters

MatrX Adhesives are sold through qualified distributors of Glue Dots International.

MatrX Adhesives and the Dot Shot™ Pro

MatrX adhesives are intended to be applied using the **Dot Shot Pro** handheld applicator. The newly improved unit features specially designed nose rollers that allow for optimal performance with both **MatrX** and standard Glue Dots products. The ergonomic, triggerless design of the **Dot Shot Pro** provides fast and easy application resulting in increased productivity.

*Because the strength of the bond is substrate dependent, adequate testing should be conducted to determine the proper tack level for the application. **Product Samples** are available throughout the testing process.*



For more information about the MatrX adhesives, visit www.sikab.se/forsaljning or call +46 (0)550 - 41 06 40

Glue Dots™ and MatrX® are trademarks of Glue Dots International LLC, New Berlin, WI, an Ellsworth Adhesives Company.
U.S. Patent No's 5,935,670; 6,319,442; 6,640,864; 6,686,016; 8,006,734. Other U.S. and Foreign Patents Pending. ©2012 Glue Dots International.